



Versatile use:

- Ideal handling in laparoscopic (e.g. TAPP and TEP), IPOM and open procedures
- Solutions for the treatment of inguinal, umbilical and femoral hernias
- For all kinds of incisional hernia repair
- Fascial stripes for provisional soft tissue reinforcement after laparotomy
- Customized mesh implants according to the surgeons requirements

Product benefits:

- Titanium oxide coating for excellent biocompatibility
- Large pored mesh structure made of monofilament threads for improved fibroblastic ingrowth and reduced shrinkage
- Light weight character
- High tensile strenght 55 N/cm
- Self-fixating
- High flexibility and reduced rigidity for excellent mesh adaption

TiO₂ MeshTM

Surgical Mesh Implant



Product Overview TiO₂ MeshTM

MFP101	6 x 9 cm (2.4'' x 3.6'')	3 pcs	MFP121	15 x 15 cm (6'' x 6'')	3 pcs
MFP102	8 x 11 cm (3.2'' x 4.4'')	3 pcs	MFP131	20 x 15 cm (8'' x 6'')	3 pcs
MFP103	10 x 12 cm (4'' x 4.8'')	3 pcs	MFP132	Oval 20 x 15 cm (8'' x 6'')	1 pcs
MFP105	Circular ø 12 cm (ø 4'')	3 pcs	MFP133	Oval 25 x 20 cm (10'' x 8'')	1 pcs
MFP111	10 x 15 cm (4'' x 6'')	3 pcs	MFP141	30 x 30 cm (12'' x 12'')	1 pcs
MFP112	12 x 17 cm (4.8'' x 6.8'')	3 pcs	MFP333	Hernia Patch Lichtenstein 13 x 6 cm (5.1'' x 2.4'')	3 pcs



BioCer

BioCer Entwicklungs-GmbH

Ludwig-Thoma-Str. 36c · 95447 Bayreuth · Germany · Tel. +49 (0)921 78 77 70 0
Fax. +49 (0)921 78 77 70 79 · info@biocer-gmbh.de · www.biocer-gmbh.de



MDD103.10/2018-02

Bio-compatible
Coating

made in
GERMANY

Fast - Effective - Safe

BioCer

TiO₂Mesh™

TiO₂Mesh™ is a surgical mesh implant specially indicated for repair of soft tissue defects of the abdominal wall, where a non-absorbable support material is required. Relevant

applications include the repair of inguinal and incisional hernias in all common surgical procedures and even IPOM.

Fast

- Supports the clinical time management
- Easy handling

Effective

- Improved fibroblastic ingrowth
- Biodynamic stress strain behavior for excellent mesh adaption

Safe

- Reduced shrinkage and improved implant incorporation
- Intensive support and product training by BioCer Entwicklungs-GmbH

Easy to use

Self inflating

Self inflating for fast and effective laparoscopic handling.

Orientation stripes

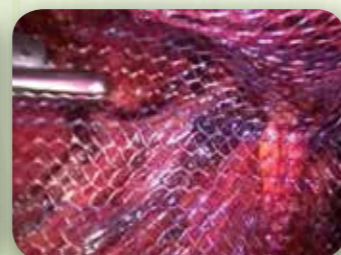
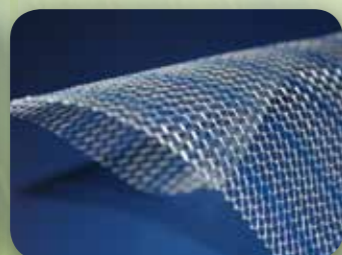
Blue orientation stripes facilitates the intraoperative positioning.

Large pores

Large pored structure supports visibility and transparency.

Self-fixating

Hydrophilic implant surface supports intraoperative handling.



Titanized solutions for hernia repair

TiO₂Mesh™ is made from a monofilament polypropylene thread and has a large-pored structure with blue orientation stripes. The single fibers of the mesh implants are completely covered by a high-purity and adherent titanium oxide surface coating to enhance the biocompatibility. This layer results in an excellent biocompatibility.

In combination with the lightweight character, the large-pored structure and the reduced material surface lead to improved fibroblastic ingrowth and reduced shrinkage.

TiO₂Mesh™ is highly flexible to react to body dynamics in terms of tensile strength and elasticity. The optimized pore structure results in a biodynamic stress strain behavior.

TiO₂Mesh™ has lasercut edges with blunt fiber ends to reduce micro traumata, irritation and penetration into vessels and nerves.

Customized mesh implants according to the surgeons requirements complete the product portfolio of TiO₂Mesh™.

Self-fixating

Titanium Oxide Layer

