



ASSUT EUROPE

SUTURE CHIRURGICHE



More than surgery





**PRODOTTI SPECIALI
SPECIAL PRODUCTS
PRODUCTOS ESPECIALES**

Protesi in polipropilene monofilamento

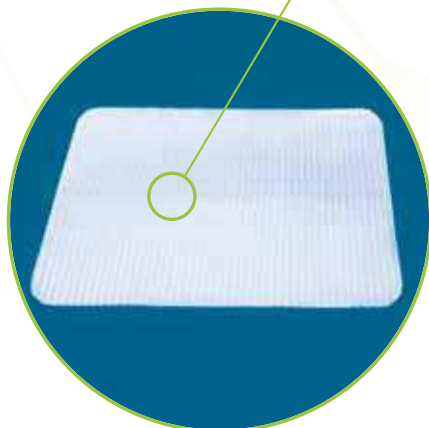
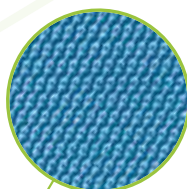
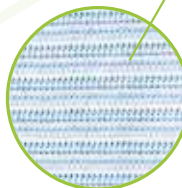
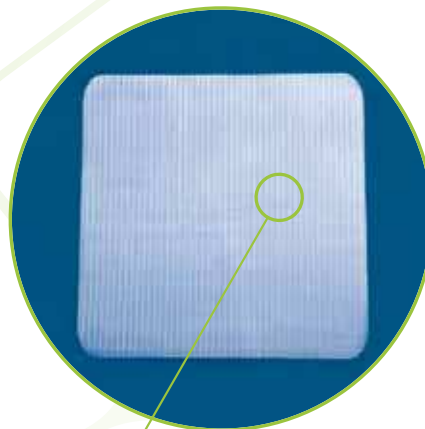
Monofilament polypropylene implant Prótesis en polipropileno monofilamento



PROTESI IN POLIPROPILENE MONOFILAMENTO 90 g/m2
MONOFILAMENT POLYPROPYLENE IMPLANT 90 g/m2
PRÓTESIS EN POLIPROPILENO MONOFILAMENTO 90 g/m2

CODICE CODE CÓDIGO	MISURA SIZE MEDIDA (cm)	CONF.
AM 2080	2 x 8	10
AM 6011	6 x 11	10
AM 8015	8 x 15	10
AM1515	15 x 15	10
AM 2030	20 x 30	6
AM 2535	25 x 35	6
AM 3030	30 x 30	6

Ulteriori misure disponibili su richiesta
More sizes available on request
Consultar para otras medidas



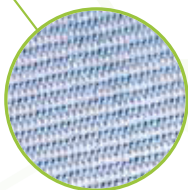
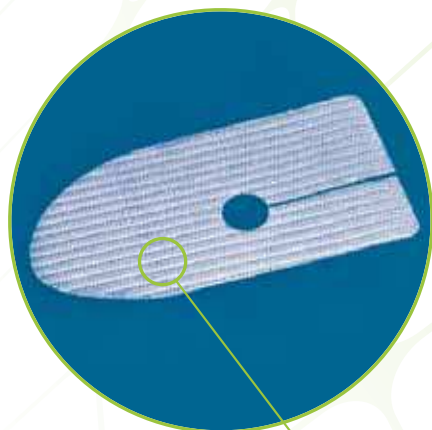
PROTESI IN POLIPROPILENE A BASSA DENSITÀ 55 g/m2
LOW DENSITY POLYPROPYLENE IMPLANT 55 g/m2
PRÓTESIS EN POLIPROPILENO DE BAJA DENSIDAD 55 g/m2

CODICE CODE CÓDIGO	MISURA SIZE MEDIDA (cm)	CONF.
AM 6012	6 x 11	10
AM 8016	8 x 15	10
AM 1516	15 x 15	10
AM 2032	20 x 30	6
AM 2536	25 x 35	6
AM 3032	30 x 30	6

Ulteriori misure disponibili su richiesta
More sizes available on request
Consultar para otras medidas

Protesi in polipropilene monofilamento

Monofilament polypropylene implant
Prótesis en polipropileno monofilamento



PROTESI PRESAGOMATE CON PLUG
PRE SHAPED IMPLANT WITH PLUG
PRÓTESIS PREMOLDEADAS CON PLUG

CODICE CODE CÓDIGO	MISURA SIZE MEDIDA (cm)	CONF.
AM 5010P	5 x 10 + Plug Ø 5	6

PROTESI PRESAGOMATE SENZA PLUG
PRE SHAPED IMPLANT WITHOUT PLUG
PRÓTESIS PREMOLDEADAS SIN PLUG

CODICE CODE CÓDIGO	MISURA SIZE MEDIDA (cm)	CONF.
AM 5010	5 x 10	6
AM 5012*	5 x 10	6
AM 7014	7 x 14	6

* Con lembi sovrapponibili
* With overlapping strips
* Con lados sobrepuestos

PLUG VOLUMETRICI
VOLUMETRIC PLUG
PLUG VOLUMÉTRICO

CODICE CODE CÓDIGO	MISURA SIZE MEDIDA (cm)	CONF.
AM 03	3	6
AM 05	5	6

PLUG

CODICE CODE CÓDIGO	MISURA SIZE MEDIDA (cm)	CONF.
AM 5000	Ø 5	10
AM 7000	Ø 7	10

